

FleetCom

Voice
Message
Alarm & Display
Trace & Tracking



What is it?

The FleetCom is an all-in-one GPS tracking, alarm and communication system.

What does it do?

The FleetCom comprises of a GPS tracking and security unit (with a build-in car alarm system) for vehicle tracking, monitoring and security. It has a voice function which allows for phone and SMS communication.

It also includes an in-cab data display and communication terminal which displays all the data that is being collected by the GPS unit in real-time. The display terminal includes a handset for making telephone and SMS communication easier and it also has two additional COM ports for connection to aswap cards and barcode/RFID readers etc.

Who is it for?

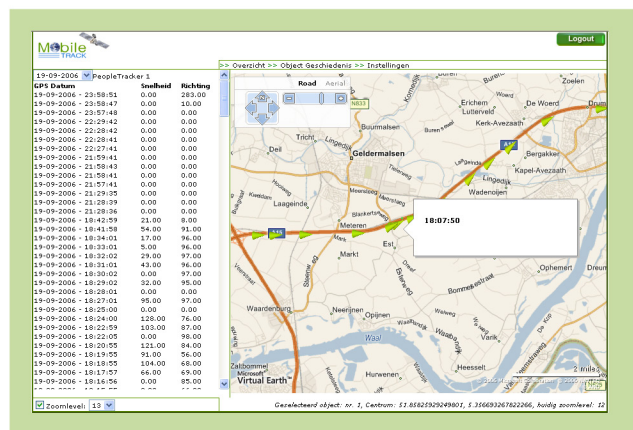
The FleetCom is designed for commercial applications where it is necessary for the vehicle driver or headquarter to have knowledge of the data being collected by the GPS device (such as vehicle position and cargo temperature) and also where it is necessary to have constant voice or SMS communication with other parties.

What's so special about it?

- Compact, all-in-one GPS tracking, security, alarm and voice/SMS communication device;
- Voice function allows the driver to make and receive phone calls using the GSM network;
- FleetCom display terminal for monitoring vehicle position, vehicle security and cargo status, and receiving and sending messages;
- Extremely reliable, with superior GPS signal acquisition and reacquisition performance.

Design features

- Quality components chosen with a bias for achieving optimum stability, accuracy & low power consumption;
- Sony Ericsson GPRS module;
- Trimble GPS module for improved GPS performance and greater positioning accuracy;
- Rugged design, yet small, light and compact;
- Vigorously tested for vibration, shock, drops, humidity and fog/salt spray corrosion;
- Built-in emergency battery.



TECHNICAL SPECIFICATIONS - MobileTrack FleetCom

Physical Parameters

Dimensions (mm)	138 x 95 x29
Weight	200g

Environmental

Operating temperature	-20C to +55C
Storage temperature	-40C to +85C

Electrical

Power

DC Supply voltage	12V
Recharge voltage	9V - 16V
Current (GPRS online)	50mA
Current (GPRS transmitting)	80mA
Current (peak)	120mA

Internal emergency battery

Battery type	Ni-Mh 4,8V
Battery capacity	80mAH
Charge type	Build-in charge circuit with jumper protection

I/O connections

Connector

1 x 3-pin connector	PC setup cable
1 x 2-pin connector	GPS data output
1 x 3-pin connector	Shock sensor
1 x 3-pin connector	Tilt sensor
1 x 4-pin connector	2 button valet switch (optional)
1 x 3-pin connector	1 button valet switch (optional)
1 x 4-pin connector	12 button valet switch (optional)
1 x 3-pin connector	Display terminal

GPS module

Protocol	NMEA0183
Baud rate	9,600
Signal	1,575 Mhz
No. of channels	12 channel, simultaneous operation
Antenna type	Active 3,3V
Antenna connector	Gold, male, SMA
Horizontal accuracy	<8m
Altitude accuracy	<16m
Hot start	<13s
Warm start	<42s
Cold start	<84s

GPRS module

Frequency range (Mhz)	900/1800 or 850/1900
Channel spacing	200
GPRS connectivity	GPRS multi-slot class 8
	GPRS mobile station class B
SIM card interface	3V/5V
SMS storage capacity	40 in ME
Antenna connector	Silver male, TNC
Antenna impedance	50ohms

Certifications

ISO 9001
TS 16949
FC CE

